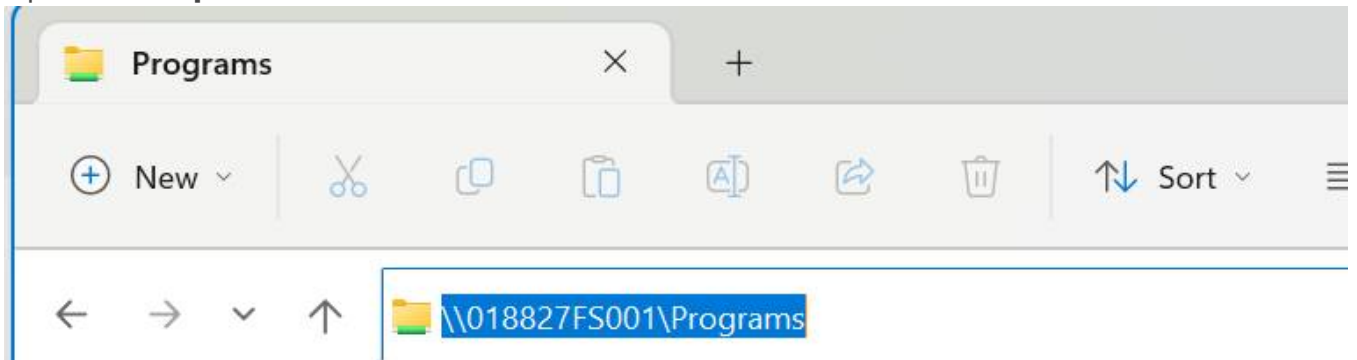


# Installation and Licensing Guide: RealCAD 5.5

## Step 1: Access the Installation Files

1. Open **File Explorer**.



2. In the address bar, enter: `\\018827FS001\Programs`
3. If prompted to log in:
  - **Username:** `DE username`
  - **Password:** Your DE password
4. Navigate to the folder `RealCAD-v5.5` and open it.
5. Double-click `RealCAD-v5.5-Installer.exe` to start the installation.
6. Follow the on-screen instructions to complete the installation.

## Step 2: License RealCAD 5.5

1. Launch **RealCAD 5.5** for the first time.
2. Click **Set License Key**.



This software does not have a valid license key.

Click  to purchase your software license.

Click  to obtain or enter a new license KEY.

Click  to run the software in trial mode.

In trial mode, only small models (drawings) may be saved and no application entities (such as walls) can be saved.

3. Under **Have you purchased?**, select **Yes**.

## Software License - Main CAD Application

To obtain a license KEY number you must first purchase a software license

Have you purchased?

Yes

No

Buy Now

Normal stand-alone machine license

Connect to a licensed network server

Network

This machine is connected to the internet and I have my serial number

Email Address

Software Serial Number

Get License

This machine is not connected to the internet

Offline Key Activation

Step 1. Copy the LOCK # to send to your dealer

Print

Software LOCK #

16DDE5C2-133EA31B

Copy

Step 2. Contact your dealer to obtain your activation key.

Step 3. Type or paste your activation KEY below...

(A to F, digits 0 to 9 and - only)

Paste

Validate

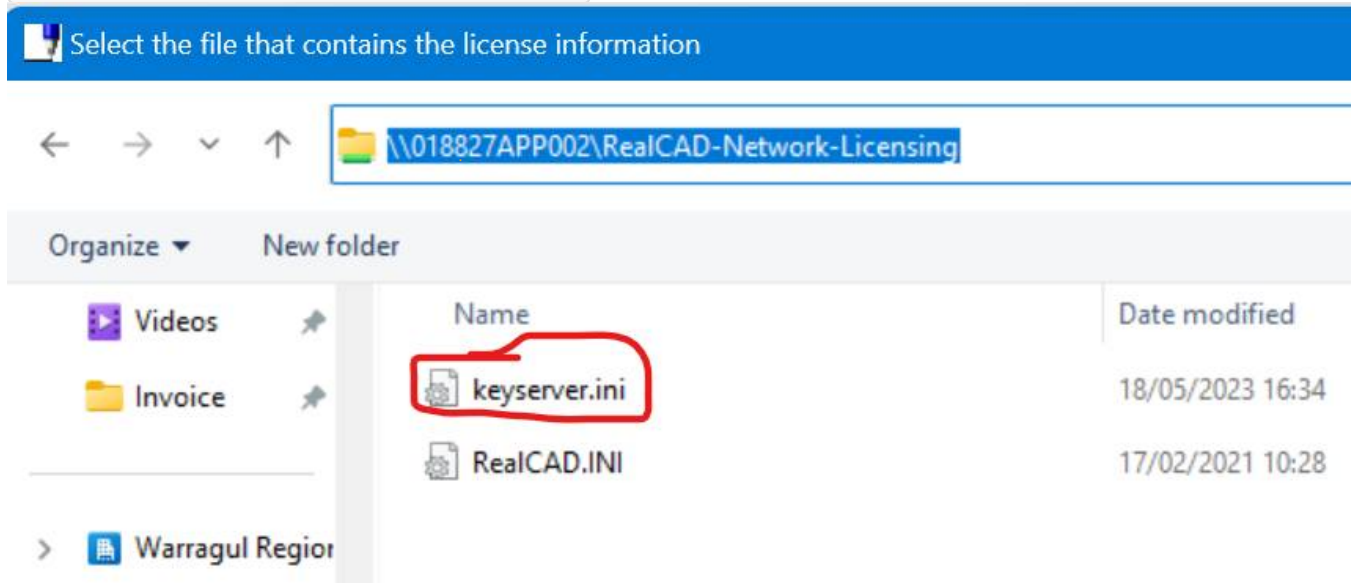
Exit to

Trial mode

4. Choose **Connect to a licensed network server**.

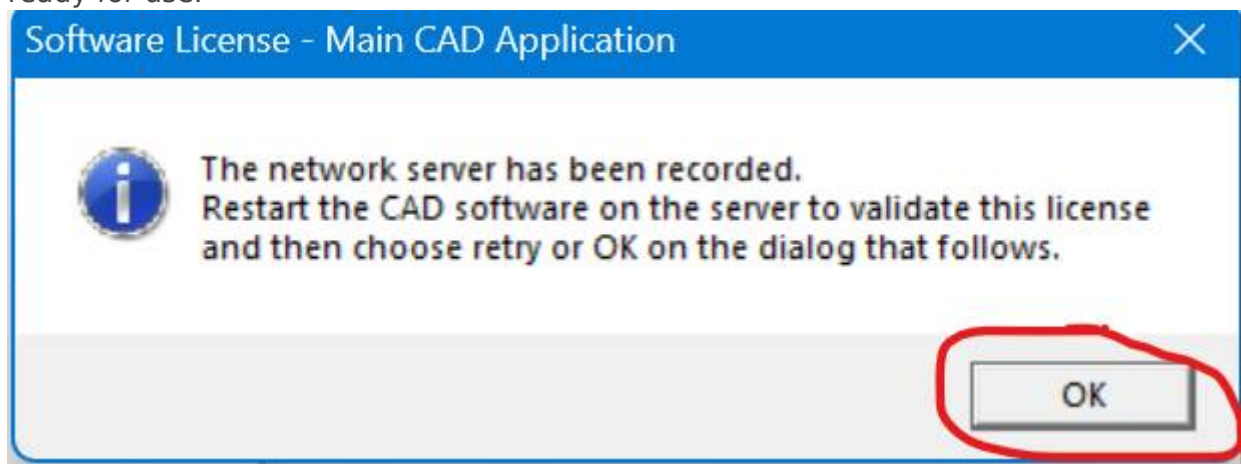
5. Enter or copy the following into the address bar:

\\018827APP002\RealCAD-Network-Licensing



6. Double-click `keyserver.ini`.

7. **Important:** Do not click **OK** immediately. IT must restart the RealCAD 5.5 License Server to apply the license to your device. Once the license has been applied, RealCAD 5.5 is ready for use.



## Step 3: Troubleshooting

If you receive an error message during licensing:

1. Create a support ticket: <https://support.wrc.vic.edu.au/>
  - Sign in with your **WRC account** (not your email address)
2. Alternatively, email **it@wrc.vic.edu.au** requesting the RealCAD 5.5 License Server to be restarted.

Software License - Main CAD Application



The license key is invalid or has not been validated by the server.

OK

---

Revision #4

Created 2024-08-29 03:51:59 UTC by Administrator

Updated 2025-09-10 07:36:54 UTC by 10020431